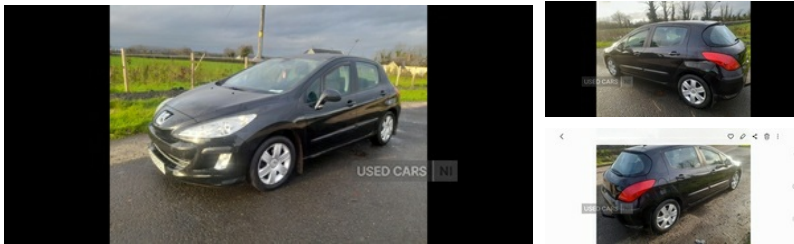


## Peugeot 308 1.6 HDi 92 S 5dr | Jan 2011

# £1,195



Owned 4 years.1 years mot new timing belt well serviced alloys  
Good tyres  
Starts and drives perfect 2 keys towbar  
New car forces sale etc total bargain cash sale

### Vehicle Features

3 grab handles with rear coat hook, 3 point rear seatbelts x3, 6 speakers (4 speakers/2 tweeters), 12V accessory power point in centre console, 15" steel wheels, 60/40 split folding rear seat back and squab, ABS/EBFD/EBA, Active front seat backrests, Air conditioned glove box, Air conditioning, Ashtray and cigar lighter, Audible lights on warning, Automatic boot locking, Automatic door lock/re-lock after 30 seconds, Automatic illumination of hazard warning lights, Black dials with grey surround, Black grille bars, Body colour door/boot handles, Body colour door mirrors, Body colour front/rear bumper aprons, Boot light, Car location device via plip key, Cloth upholstery, Courtesy lights, Deadlocks, Digital clock, Double angled driver's door mirror, Double optic headlights with clear polycarbonate lenses, Driver + passenger vanity mirrors, Driver SMART airbag, Electric boot release on tailgate, Electric front windows + one touch + anti-pinch, Electric rear windows with one touch/anti-pinch, ESP and ASR traction control with deactivation switch, External temperature gauge, Front/rear armrests, Front and rear curtain airbags, Front door stowage bins incorporating drinks holders, Front fog lights, Front map reading lights, Front passenger SMART airbag with deactivate switch, Front seat back map pockets, Front seatbelt pretensioners with force limiters, Front side airbags, Grey finish interior door trim, Headlamp delay illumination, Heating/air conditioning outlet in rear, Height/reach adjust steering wheel, Height adjustable driver's seat, Height adjustable front headrests, Height adjustable passenger seat, Height adjustable rear head restraints, Ignition key in warning chime, Information display, Instrument lighting dimmer, Intermittent rear wash/wipe, Isofix on 2nd row rear seats, Luggage area underfloor compartment, Panic button, PAS -

<b>Miles:</b>	139000
<b>Fuel Type:</b>	Diesel
<b>Transmission:</b>	Manual
<b>Colour:</b>	Black
<b>Engine Size:</b>	1560
<b>CO2 Emission:</b>	115
<b>Tax Band:</b>	C (£35 p/a)
<b>Body Style:</b>	Hatchback
<b>Reg:</b>	Efz6757

### Technical Specs

#### DIMENSIONS

<b>Length:</b>	4276mm
<b>Width:</b>	1821mm
<b>Height:</b>	1519mm
<b>Seats:</b>	5
<b>Luggage Capacity (Seats Up):</b>	420L
<b>Gross Weight:</b>	1804KG
<b>Max. Loading Weight:</b>	426KG

#### PERFORMANCE & ECONOMY

<b>Fuel Consum. (Urban Cold):</b>	48.6MPG
<b>Fuel Consum. (Extra Urban):</b>	74.3MPG
<b>Fuel Consum. (Combined):</b>	62.7MPG
<b>Fuel Tank Capacity:</b>	60L
<b>Number Of Gears:</b>	5 SPEED
<b>Top Speed:</b>	113MPH
<b>Acceleration 0-100 km/h:</b>	13.2s
<b>Engine Power BHP:</b>	89.8BHP

speed related, Piano black interior trim, Pollen filter and air recycling, RD4 stereo radio/mono CD player, Rear door child safety locks, Reclining front seats, Remote control central locking with two flip keys, Remote control closing for electric windows, Remote headlamp adjustment from fascia, Retractable steering column and brake pedal, Rev counter, Rolling code transponder immobiliser, Roof mounted sports aerial, Security coded audio, Service interval indicator, Speed dependent audio volume control, Steering column mounted multifunction controls, Storage compartment in parcel shelf, Storage compartment under load area floor, Temporary steel spare wheel, Tie down hooks in luggage area, Trip computer, Two force limiting rear seatbelts, Two shopping hooks under rear parcel shelf supports