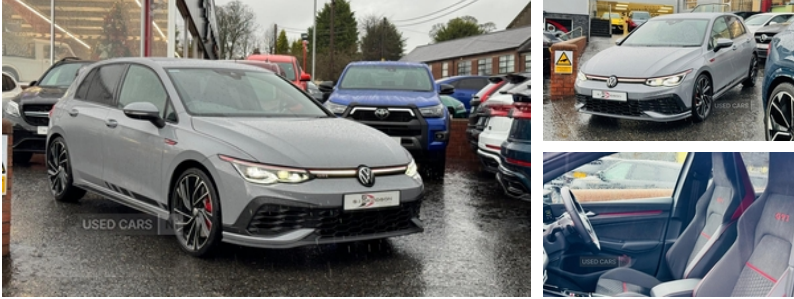


## Volkswagen Golf 2.0 TSI 300 GTI Clubsport 5dr DSG | Sep 2023

# £32,995

**ONE OWNER - N. I CAR, FULL HISTORY**



JUST IN - AWAITING PREP, Call for more info

### Vehicle Features

3 point height adj front seatbelts + pretensioners, 3 rear head restraints, 3 rear three point seatbelts, 3 seat bench in 2nd row, 3 zone climate with controls in the rear, 12V Socket - Centre Console, 12V Socket - Luggage Compartment, 12V socket in front centre console, 12V socket in luggage compartment, 18in Alloy Wheels - Richmond, 18in Performance Brake System with Red Brake Calipers with GTI Logo, ABS, Adaptive Cruise Control, Adaptive cruise control ACC with speed limiter and front assist (reacting to vehicles, adjustable and foldable door mirrors, Advanced high beam control dynamic light assist for LED matrix headlamps, Airbags, Air Conditioning - 3 Zone Electronic Climate Control, Alarm with interior protection and deactivation via infotainment system, Alarm with Interior Protection with Deactivation via Infotainment System, Aluminium gear knob, Ambient lighting, Ambient Lighting, Ambient lighting - Customisable 30 colour ambient lighting, Anti-lock Braking System - Anti-lock Braking System with HBA - Hydraulic Brake Assist, App-Connect, Auto dimming rear view mirror, Automatic Coming-Leaving Home Lighting Function, Automatic headlamp activation with Coming home and Leaving home feature, Automatic headlights, Automatic Post-Collision Braking System, Bag Hooks in Luggage Compartment - Left and Right, Black metal chrome decorative inserts in dash and front door trim panels, Black roof lining, Body-Coloured Door Mirrors with Integrated Indicators, Body colour bumpers, Body colour door handles, Body colour door mirrors with integrated indicators, Body Coloured Bumpers, Body Coloured Door Handles, Body colour rear roof spoiler, Brushed stainless steel pedals, Car2X - Intelligent Vehicle Networking, Car2X communication, Carpet

<b>Miles:</b>	13700
<b>Fuel Type:</b>	Petrol
<b>Transmission:</b>	Tiptronic Automatic
<b>Colour:</b>	Grey
<b>Engine Size:</b>	1984
<b>Tax Band:</b>	Petrol/Diesel (£190 p/a)
<b>Body Style:</b>	Hatchback
<b>Insurance group:</b>	29E
<b>Reg:</b>	VBZ55

### Technical Specs

DIMENSIONS	
<b>Length:</b>	4295mm
<b>Width:</b>	1789mm
<b>Height:</b>	1456mm
<b>Seats:</b>	5
<b>Luggage Capacity (Seats Up):</b>	374L
<b>Gross Weight:</b>	1930KG
<b>Max. Loading Weight:</b>	542KG
PERFORMANCE & ECONOMY	
<b>Fuel Consum. (Urban Cold):</b>	Not AvailableMPG
<b>Fuel Consum. (Extra Urban):</b>	Not AvailableMPG
<b>Fuel Consum. (Combined):</b>	Not AvailableMPG
<b>Fuel Tank Capacity:</b>	50L
<b>Number Of Gears:</b>	7 SPEED
<b>Top Speed:</b>	155MPH

Mats - Front and Rear, Central Locking - Remote with 2 Remote Keys, Centre Console in High Gloss Black Finish, Child locks on rear doors, Chrome Plated Electric Mirror Adjustment Switch Surround, Chrome Plated Electric Window Button Surrounds, Chrome plated surround to electric mirror button, Chrome plated tailpipes (1 either side), Cup Holders - Front x2, Digital Cockpit Pro, Digital cockpit pro - 10.25" high resolution TFT dash display screen with customizable menus and information, Digital Speedo and Rev Counter - Electronic Odometer - Trip - Service Interval Display - Exterior Temperature Gauge and Fuel Gauge, Discover Navigation Infotainment System, Door Mirrors - Electrically Adjustable-Heated and Folding, Door Sill Protectors, Driver alert system, Driver Alert System - Fatigue Detection, Driver and front passenger airbag with front passenger airbag deactivation, Driver Profile Selection, Drivers and front passengers safety optimised head restraints, Drivers and front passengers sun visors with vanity mirrors, Drivers and Passengers Safety Optimised Head Restraints, Dusk Sensor - Automatic Driving Lights, Dynamic road sign display, eCall - Emergency call service for SOS calls to emergency response, Electric Windows - Front and Rear, Electronic engine immobiliser, electronic odometer, Electronic parking brake with auto hold, Electronic Parking Brake with Auto Hold Function, ESC (Electronic Stability Control), ESC - Electronic Stability Control, Extended pedestrian protection measures, exterior illuminated styling elements at the sides, exterior temperature and fuel gauge, Flared Side Skirts, Front and rear electric windows, Front and rear passengers curtain airbag system including front side airbags, Front centre armrest with storage compartment, Front cupholders x 2, Front differential lock, Front disc brakes, Front passenger seat, Front reading lights x 2 incorporating LED technology, Front Seat Back Storage Pockets, Front seat lumbar support adjuster, Front Splitter for Increased Downforce, Front Sport Seats with Height and Lumbar Adjustment, Front sports seats, Galvanised Body, Gloss Black Decorative Inserts in Dash Surround with Parking Brake, Gloss Black Two-part Performance Rear Spoiler, Glovebox, Grab Handles - Front - Rear x2, GTI Clubsport Decorative Inserts in Dash and Front Door Panels, GTI Clubsport styled bumpers, GTI Clubsport Styling Pack, GTI logo on backrest, Head Restraints - Front Integrated, Heated rear windscreen, Heat insulating glass windscreen, Height-Adjustable Front Three-Point Seat Belts with Tensioners, Height adjustable front seats, Height and reach adjustable steering wheel, High gloss black centre console, High level 3rd brake light, High Level 3rd Brake Light Incorporating LED Technology, Highway light, Illuminated front grille, including door mirror puddle lights and reverse activated kerb-view adjustment on pa, Interior Light Delay, Interior Styling Highlights with Red Contrast Stitching, IQ.Light - LED Matrix headlights inc.

**Acceleration 0-100 km/h:** 5.6s

**Engine Power BHP:** 296.4BHP

dynamic cornering with LED interactive matrix dipped and main beam + LED daytime running light + 22 LED lights, IQ Light LED Matrix Headlights includes Dynamic Cornering, ISOFIX Child Seat Preparation, Isofix child seat preparation for 2 rear child seats and front passenger seat, Keyless Entry - with Start-Stop Button, Keyless entry with start/stop button on centre console, Lane assist, Lane Assist with Road Edge Recognition, Lane change assistant, Lane Change Assist with Rear Traffic Alert and Exit Warning, Leatherette door armrests and centre armrest, Leather wrapped multifunction sports heated steering wheel with paddle shift, LED Footwell Illumination - Front, LED Front Fog Lights - x5 Individual Set in Honeycomb Front Air Intake, LED front fog lights with 5 honeycomb design, LED License plate illumination, LED Lighting in Door Handle Recess - Front and Rear, LED rear combination lamp including dynamic turn signal, LED Rear Light Clusters with Dynamic Sequential Indicators, Lights on Warning Buzzer, Load-Through Provision, Load Lashing Points x2 in Luggage Compartment, Lowered Sports Suspension, Luggage Compartment Cover - Stowable, Luggage Compartment Light Incorporating LED Technology - Right, Luggage compartment lighting, Mobile phone interface with wireless inductive charging function, Parking Sensors - Front and Rear, PAS, Pedals - Brushed Stainless Steel, pedestrians and cyclists), Performance rear spoiler, Petrol Particulate Filter, Predictive Pedestrian Protection, Premium USB cable in choice of either Apple or Android smartphone compatibility, Premium USB C Cable - Choice of Either Apple or Android Smartphone Compatibility, Progressive Steering, Rain sensor, Rain Sensor and Automatic Dimming Rear-View Mirror, Reading Lights - Front and Rear x2 Incorporating LED Technology, Rear Centre Armrest - Folding with Cup Holders x2, Rear disc brakes, Rear fog light on one side and reversing lights on both sides, Rear Number Plate Lights Incorporating LED Technology, Rear Screen Wash-Wipe with Intermittent Wipe, Rear side wing doors, Rear Tinted Glass, Rear tinted glass 65% light absorbing from B pillar backwards, Rear windscreen washer and wiper with interval delay, Remote electrically heated, Removable luggage compartment cover, rev counter, service interval display, Side Airbag in Front with Curtain Airbag and Centre Airbag in Front, Soul dashboard, Speedo, Split folding backrest with centre armrest and unsplit rear seat bench, Split Folding Rear Backrests 60-40, Start/Stop function, Steering Wheel - Heated Multifunction Leather Trimmed, Storage Compartment in Centre Console, Storage Compartment in Front and Rear Doors, Three Rear 3-Point Seat Belts, Three Rear Head Restraints, Touch Sensitive Shortcut Menu Items for Infotainment Display, Travel Assist with Emergency Assist and Side Assist with Rear Traffic Alert, Travel assist with emergency side assist with electrically foldable door mirrors, trip, Two tone horn, Tyre

Mobility Kit and Compressor, Tyre mobility kit Includes 12V compressor and tyre sealant, Tyre Pressure Loss Indicator, Tyre pressure monitoring system, Unique GTI Aluminium Gear Knob, Unique GTI Badging, Unique GTI Clubsport Decals on Lower Edge of Door Panel, Unique GTI Clubsport Rear Diffuser - Black, Unique GTI Clubsport Twin Oval Chrome Exhaust Tailpipes - Left and Right, USB-C Ports in the Front and Centre Console in the Rear with Increased Charging Performance, USB-C ports in the front and rear centre console with increased charging performance, Vanity Mirrors - Illuminated, Variable Boot Floor - Height Adjustable and Removable, Warning Buzzer and Light for Front Seat Belts if Unfastened, Warning buzzer and light for front seatbelts unfastened, We Connect Plus Preparation, Welcome light, window switch and air vent surrounds, Windscreen Wiper with Intermittent Wipe and 4 Position Delay, Wireless app connect, Wireless Smartphone Charger, Woven fabric storage compartments in front and rear doors, XDS electronic differential lock for improved traction and handling