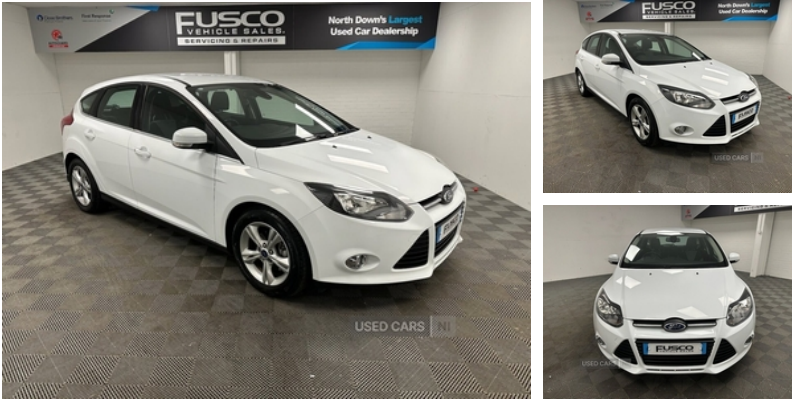


Ford Focus 1.0 EcoBoost Zetec 5dr | Sep 2014
LOW MILEAGE, 2 KEYS, GOOD SERVICE HISTORY,
BLUETOOTH

£4,595



Miles:	58669
Fuel Type:	PETROL
Transmission:	Manual
Colour:	White
Engine Size:	999
CO2 Emission:	109
Tax Band:	B (£20 p/a)
Body Style:	Hatchback
Insurance group:	11E
Reg:	UFZ4325

Ford has a reputation for making great-handling cars and this Focus continues that good name. Against all it's rival Ford has produced another great all round hatchback that not only handles as all cars of this ilk should, but is also loaded with specification and is in our view also the prettiest of anything any other manufacturers have to offer! Fusco Vehicle Sales - ***North Down's largest used car dealership & Northern Ireland Used Dealer Of The Year 2024 Award Winner *** Generally over 150 Used cars & Commercial vehicles on site. See our "Part Exchange Estimator" and "Apply For Finance Application" on our website. HP & PCP Finance Options Available. Part exchanges welcome. Buy with confidence, all vehicles HPI Clear. 15 month Platinum Warranty's available - Only 15 minutes drive from Belfast

Vehicle Features

'Quickclear' heated windscreen/heated washer jets, 4 spoke leather steering wheel with silver accents, 6 speakers, 12V power point front/rear, 12V Power Socket - Front, 15 Month Platinum Warranty's Available, 16in Alloy Wheels - 5x2 Spoke, 60/40 split back and cushion rear seats with 2 height adjustable headrests, ABS+Electronic Brake force Distribution, Airbags - Curtain, Airbags - Front Passenger, Airbags - Side Impact, Air Conditioning, Air conditioning - CFC-free, Anti-burst high-security shielded door locks, Anti-lock Braking System - Anti-lock Braking System, Black headlamp bezels, Bluetooth Handsfree and Voice Control, Body colour bumpers, Body colour door handles, Body colour electric adjustable heated door mirrors, Body colour rear spoiler, Centre console storage box, Chrome finish on upper door line, Cloth upholstery, Courtesy light in luggage compartment,

Technical Specs

DIMENSIONS

Length:	4358mm
Width:	1823mm
Height:	1484mm
Seats:	5
Luggage Capacity (Seats Up):	316L
Gross Weight:	1900KG
Max. Loading Weight:	624KG

PERFORMANCE & ECONOMY

Fuel Consum. (Urban Cold):	48.7MPG
Fuel Consum. (Extra Urban):	68.9MPG
Fuel Consum. (Combined):	60.1MPG
Fuel Tank Capacity:	55L
Number Of Gears:	5 SPEED
Top Speed:	115MPH
Acceleration 0-100 km/h:	12.5s
Engine Power BHP:	99.2BHP



DAB radio/CD and Ford SYNC Bluetooth connection with voice control, Digital clock, Door ajar warning, Door Handles - Body Colour, Door Mirrors - Heated - Electric - Integrated Side Indicators - Body Coloured, Driver's seat manual height adjust, Driver's seat with adjustable lumbar support, Driver/passenger front seatback pockets, Driver airbag, Drivers Airbag, Easy fuel capless refuelling system, EBA - Emergency Brake Assist, EBD - Electronic Brakeforce Distribution, Eco mode, Electrically-Operated Front Windows with One Touch Drivers, Electric boot release, Emergency Assistance, Emergency Brake Lights, EPAS - Electric Power Assisted Steering, ESP - Electronic Stability Programme, ESP with traction control + emergency brake assist, Exterior temperature gauge, Finance Options Available, Ford AM-FM CD Audio System, Ford DAB Audio System with SYNC, Ford Eco Mode - Driver Information System, Ford SYNC, Front and rear folding grab handles (coat hooks on rear), Front fog lights, Front inertia reel height adjustable seatbelts with pre-tensioners, Front passenger airbag, Front side airbags, Front variable intermittent wipers with electric wash, Gear lever knob with satin aluminium insert, Handbrake release button with aluminium finish, Headlight levelling control, Heated Front Windscreen, Heated rear window, Heated Washer Jets, Height adjustable front headrests, Home Delivery Available, HPI Certificate Provided, Illuminated heater controls, Immobiliser-Passive Anti-Theft System (PATS), IPS - Intelligent Protection System, ISOFIX - Child Seat Attachments, Isofix child seat preparation, Lights on warning, Locking wheel nuts, Low screen washer fluid warning, Mini Steel Spare Wheel, PAS, Pollen/active carbon filters, Reach + rake adjustable steering column, Rear Spoiler - Body Colour, Remote central double locking, Remote Central Locking, Seats - 60-40 Rear Split Back, Seats - Drivers Lumbar Support, Seats - Drivers Manual Height and Fore-Aft Adjustment, Seats - Front Sports, Side curtain airbags, Sports style front seats, Steering Column - Rake and Reach Adjustment, Steering column with mounted audio controls, Steering Wheel - 4 Spoke Leather Trimmed, Steering Wheel - Multifunction, Tailgate wash/wipe, Thatcham Cat.1 alarm, Thatcham Category 1 Alarm, Third fixed centre rear headrest, Three rear inertia reel lap/diagonal seatbelts, Tie down hooks in luggage area, Traction Control - TC, Trade-Ins welcome, Trip computer, TVC - Torque Vectoring Control, Tyre pressure monitoring system, USB connection, USB Connection - iPod Connectivity, Voice Control - Audio