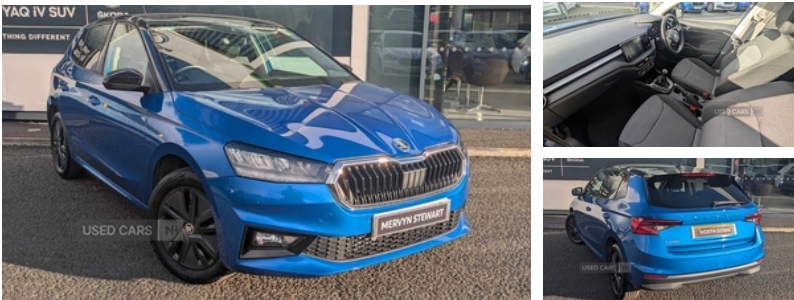


**Skoda Fabia 1.0 TSI 110 Colour Edition 5dr  
| Dec 2022**

**£15,495**

**1 PREVIOUS OWNER , AIR CON, REAR PARK ASSIST**



**Vehicle Features**

2x USB-C in the front (for data transmission and charging), 3 rear headrests, 3-point height adjustable front seats belts with pretensioner and force limiter, 6 Speakers (4 in front and 2 in rear), and towing protection, Anodized cross line upper decorative trim, Anti-theft alarm system including immobiliser, Anti-theft wheel bolts protection, ASR, Automatic warning lights in case of crash, Auxiliary socket for external MP3 player, Backrest split and folding, backup horn, Basic rear light, Bluetooth connection, Body coloured bumpers, Bolero radio with 8" colour display, Central console with fixed cup holder and storage box, Chrome handbrake release button, Colour Edition air vents, DAB digital radio reception, Dimming rear view mirror with black frame, Door mirror integrated indicators, Driver alert system - DAS, Driver and passengers airbag with switch off function, e-Call+, EDS, Electrically adjustable and heated door mirrors, Electrically adjustable front windows with function auto up/down, Electromechanical power steering, ESC including ABS, Exterior temperature gauge, Fabric upholstery, Front and rear seat belt warning, FRONT ASSIST (AEB City and AEB Inter Urban), Front side airbags, Front window wiper intermittent control, Full height hardboard side lining, Gearshift knob/handle in leather, Grain satin black central console cover, Grain satin black interior door handles, Grain satin black lower decorative trim, Hand brake lever handle in leather, HBA and XDS, Head airbags, Headlight range control - Automatic, Height adjustable front headrests, Height adjustable steering wheel, Ice scraper in fuel cap, interior monitoring, ISOFIX and TopTether anchorage points to the outer rear seats, ISOFIX and TopTether on the front passenger seat, Lane assist including road edge detection, LED daytime running lights with coming and leaving home feature, Luggage compartment lighting, Mechanical adjustable rear

<b>Miles:</b>	15322
<b>Fuel Type:</b>	PETROL
<b>Transmission:</b>	Manual
<b>Colour:</b>	Blue
<b>Engine Size:</b>	999
<b>Tax Band:</b>	Petrol/Diesel (£190 p/a)
<b>Body Style:</b>	Hatchback
<b>Insurance group:</b>	13E
<b>Reg:</b>	GSZ7078

**Technical Specs**

<b>DIMENSIONS</b>	
<b>Length:</b>	4108mm
<b>Width:</b>	1780mm
<b>Height:</b>	1459mm
<b>Seats:</b>	5
<b>Luggage Capacity (Seats Up):</b>	380L
<b>Gross Weight:</b>	1620KG
<b>Max. Loading Weight:</b>	521KG
<b>PERFORMANCE &amp; ECONOMY</b>	
<b>Fuel Consum. (Urban Cold):</b>	47.1MPG
<b>Fuel Consum. (Extra Urban):</b>	74.3MPG
<b>Fuel Consum. (Combined):</b>	61.4MPG
<b>Fuel Tank Capacity:</b>	42.5L
<b>Number Of Gears:</b>	6 SPEED
<b>Top Speed:</b>	126MPH
<b>Acceleration 0-100 km/h:</b>	9.9s
<b>Engine Power BHP:</b>	108.6BHP

windows, MSR, One tone horn, Pedestrian protection, Pollen filter, Privacy glass, Rear LED fog light, Rear seat bench unsplit, Rear side wing doors, Rear window wiper with washing nozzles, Roof mounted spoiler, Satin black door and side trim panel in front, Service interval indicator, Single front passenger seat, SKODA tailgate lettering in chrome, Storm grey headlining, Sun visors with mirror and airbag label on passenger side, Super-low rolling resistance tyres, Three rear 3-points safety seat belts with pretensioner and force limiter including stop function for outer rear seat belts, Ticket holder, Tyre pressure monitoring system, Umbrella in drivers door, Virtual cockpit with 10.25" colour display